



# COMPANY PROFILE

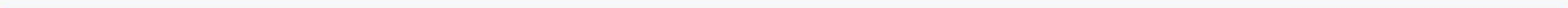




”

Every **change** is a new  
**chance.**

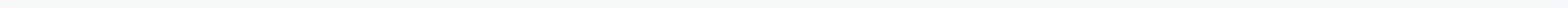
C H A N G E  
C





”

Ready to **embrace** the challenges & move?





# ABOUT US

---



We believe in simple and straight-forward approach.

In our day to day operations we try and maximise the value to everything that we have on offer.

Simplifying things and getting them work for our customers is our biggest goal.

Knowing customer's requirement and trying to exceed the same is what we try.

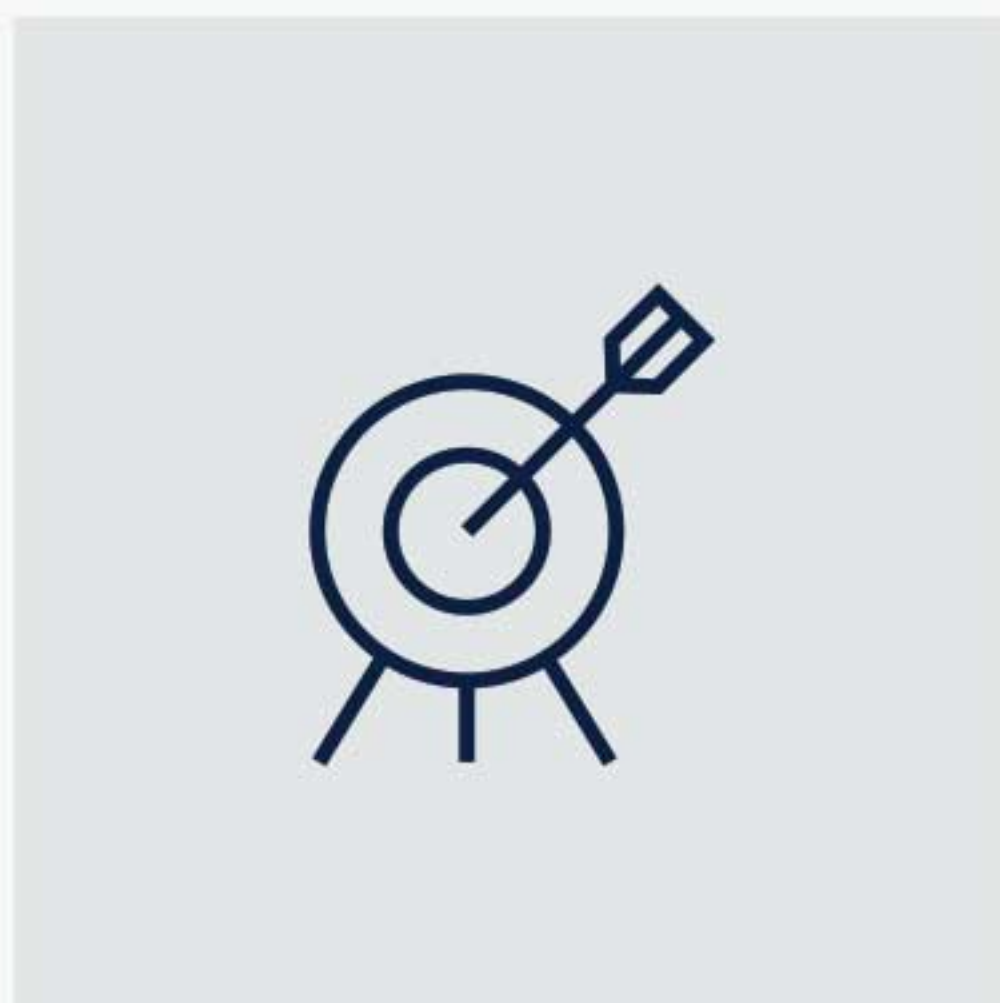
We have simple solutions and professional approach to everything that we do.



# WHAT WE DO

---

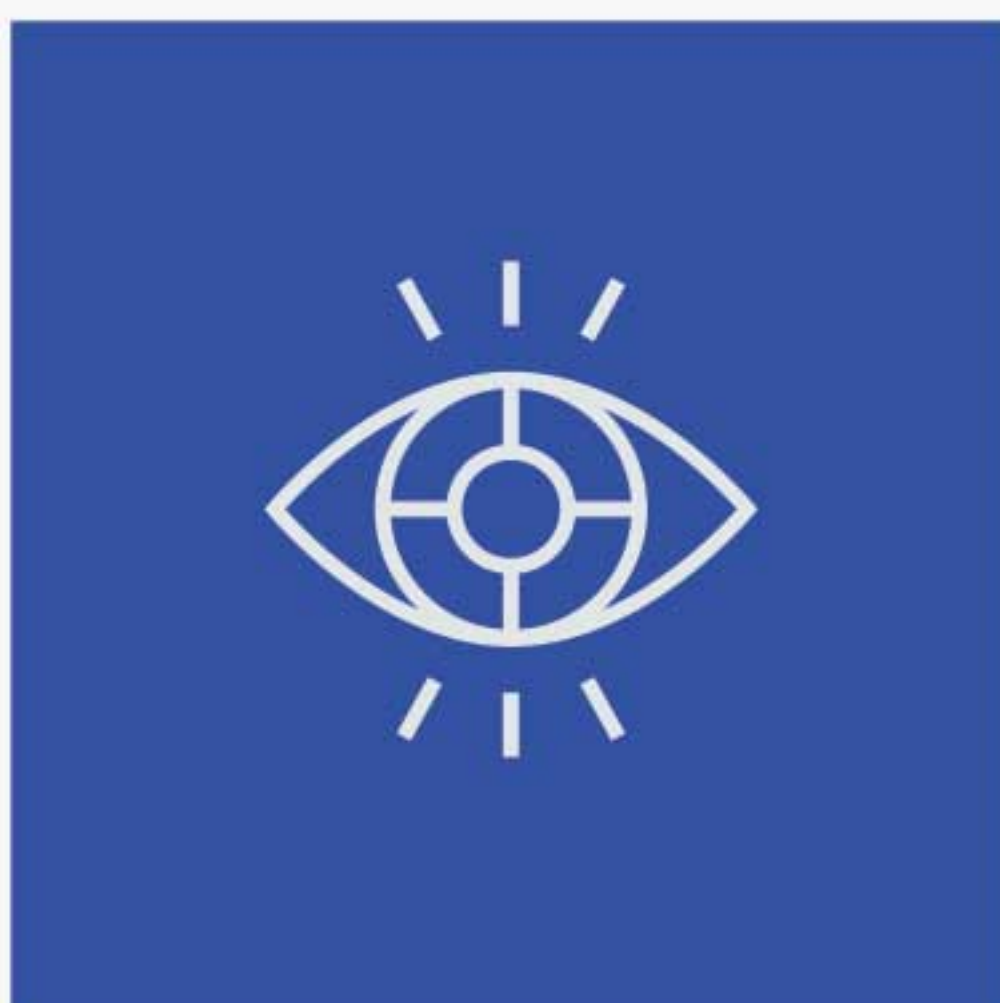
We are manufacturer & exporter of construction equipment from India.



## Hitting the bull's eye

We can hit the bull's eye only by offering the exact equipment required by the customer. Knowing your requirement is important to us.

---



## Listen, listen and listen

Listening to customers and knowing their requirement is important for us. We have done this and will continue to do this.

---



## Peace of mind

Quality products that allow customers to relax.

Customer connections and relations have been stronger with Atlas - Thanks to our customer centric policy.



# SPECO & ATLAS



Atlas is Indian manufacturer and partner of Speco Limited (Korea) for manufacturing, selling and servicing Speco plants in India. Speco Ltd. has more than 140 asphalt plants in India.



Speco Ltd. is global top class company with top quality products and state of art technology.

Supported by 170,000 sq. m magnificent estate with modern manufacturing facilities, Speco Ltd. has been able to develop advance technologies in plant industries and expand its business to manufacture military equipment and environmental facilities.



## Quality for India

Atlas is committed to serve quality by offering high end machines.



## Stronger team

We learn and grow from each other - all for your benefit.



## Technology for all

Speco's quality & reliability will be supported by Atlas.



# THE MANAGEMENT

---



## Laljibhai Patel

---

Laljibhai Patel is the guiding force behind the quality of Atlas. He has been instrumental in shaping the company through these years.



## Nilesh Patel

---

His experimental nature and growth driven strategies have put the accelerator in the company's wagon.



## Bhavesh Patel

---

The unbeatable machines of Atlas is a result of tireless efforts of Mr. Bhavesh. His relentless commitment to quality is vivid in his work ethics.

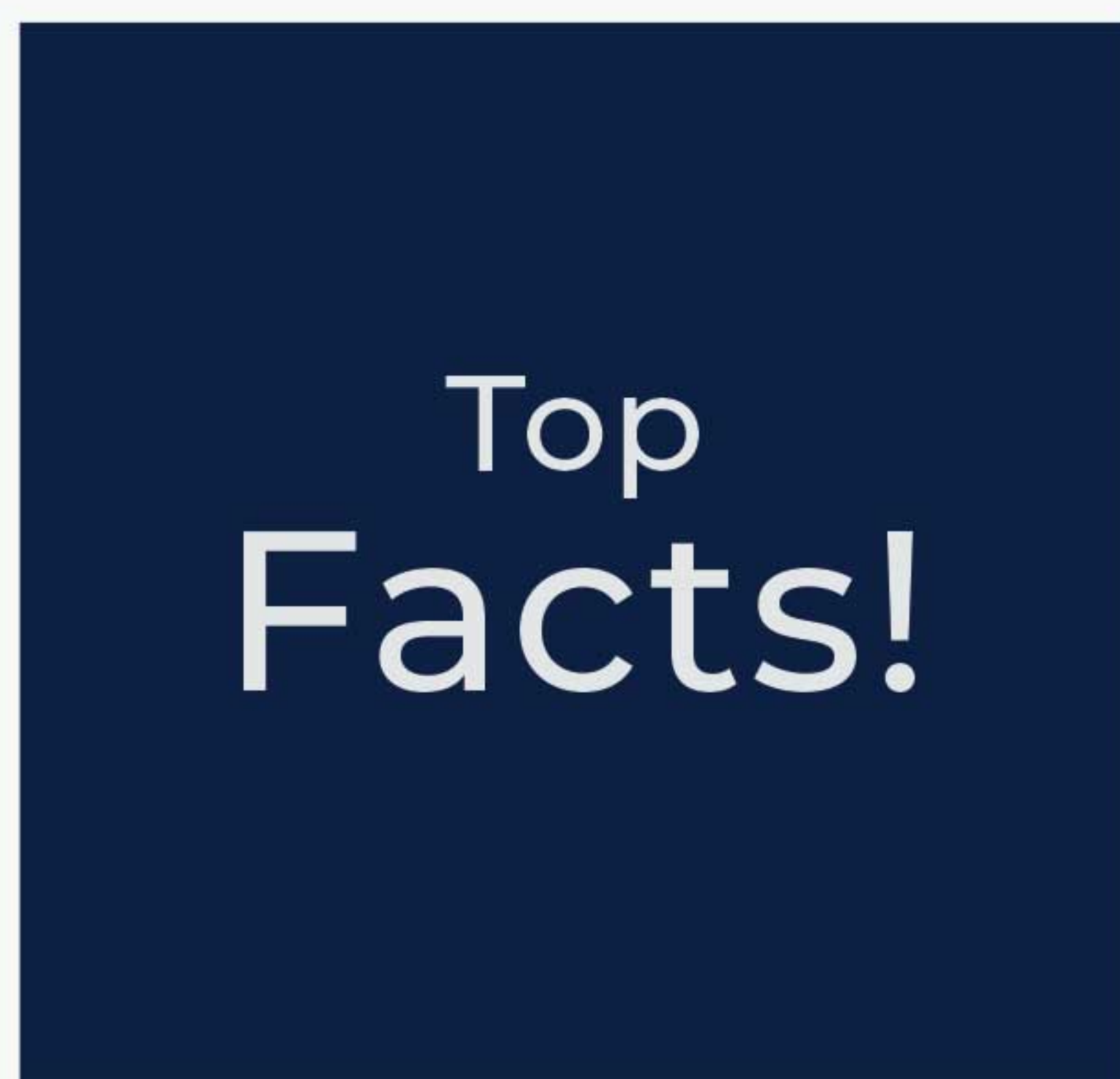


# ATLAS TECHNOLOGIES PVT. LTD.

---

Our focus is on our customer and the same is shown in our work ethics. We strive to provide superior and cost effective solutions that will help you stay ahead of your competition.

Our list of products include various road construction equipment. We support our customer till the machine is in use.



1980

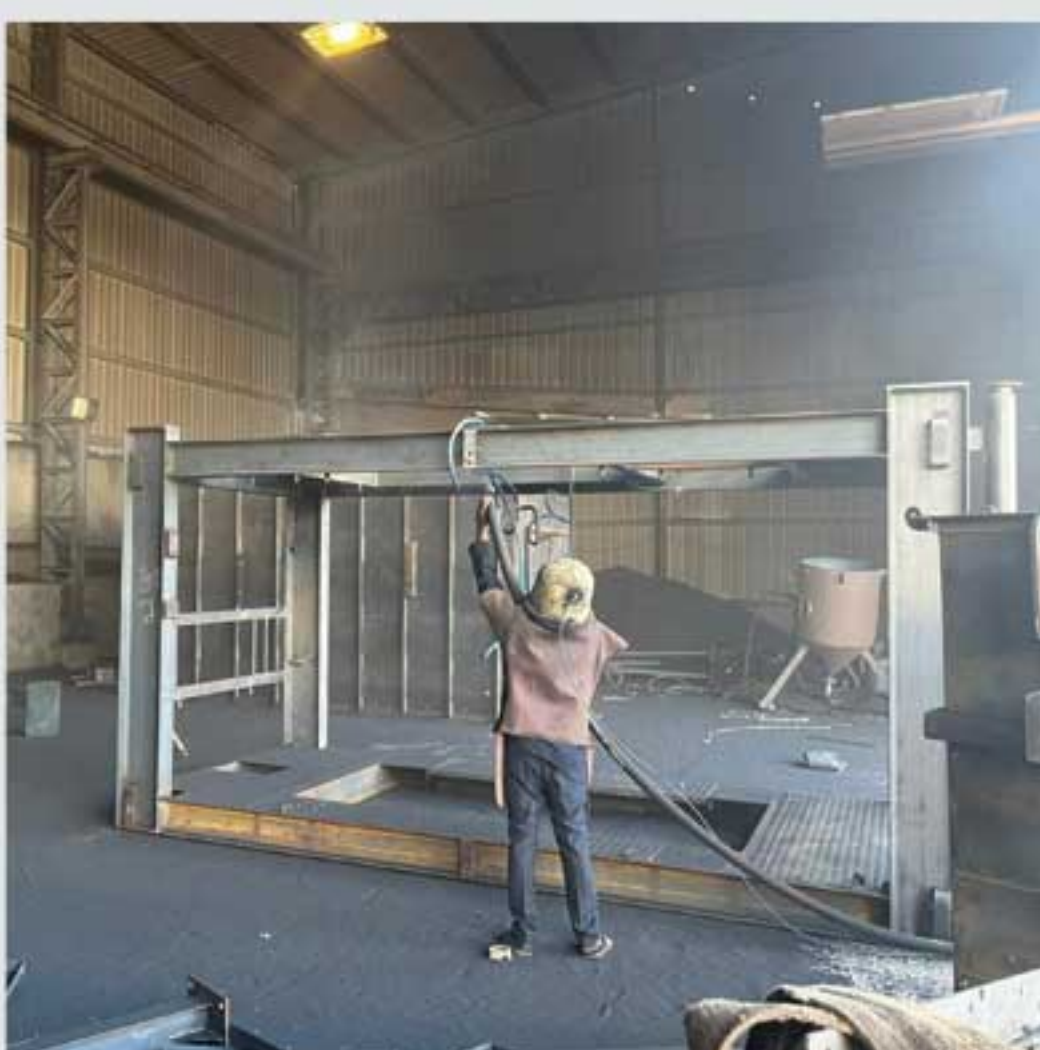
Wide experience - manufacturing since 1980

225000

Modern and generous manufacturing area - 225,000 sq. ft.

2000

Total equipment manufactured and supported more than 2000.



## Sand blasting process

Sand blasting process helps the paint to stick to the machine surface thus increasing the life of components.



## Plasma cutting

Plasma cut jobs are very precise. It helps us to follow stringent quality standards in manufacturing process.

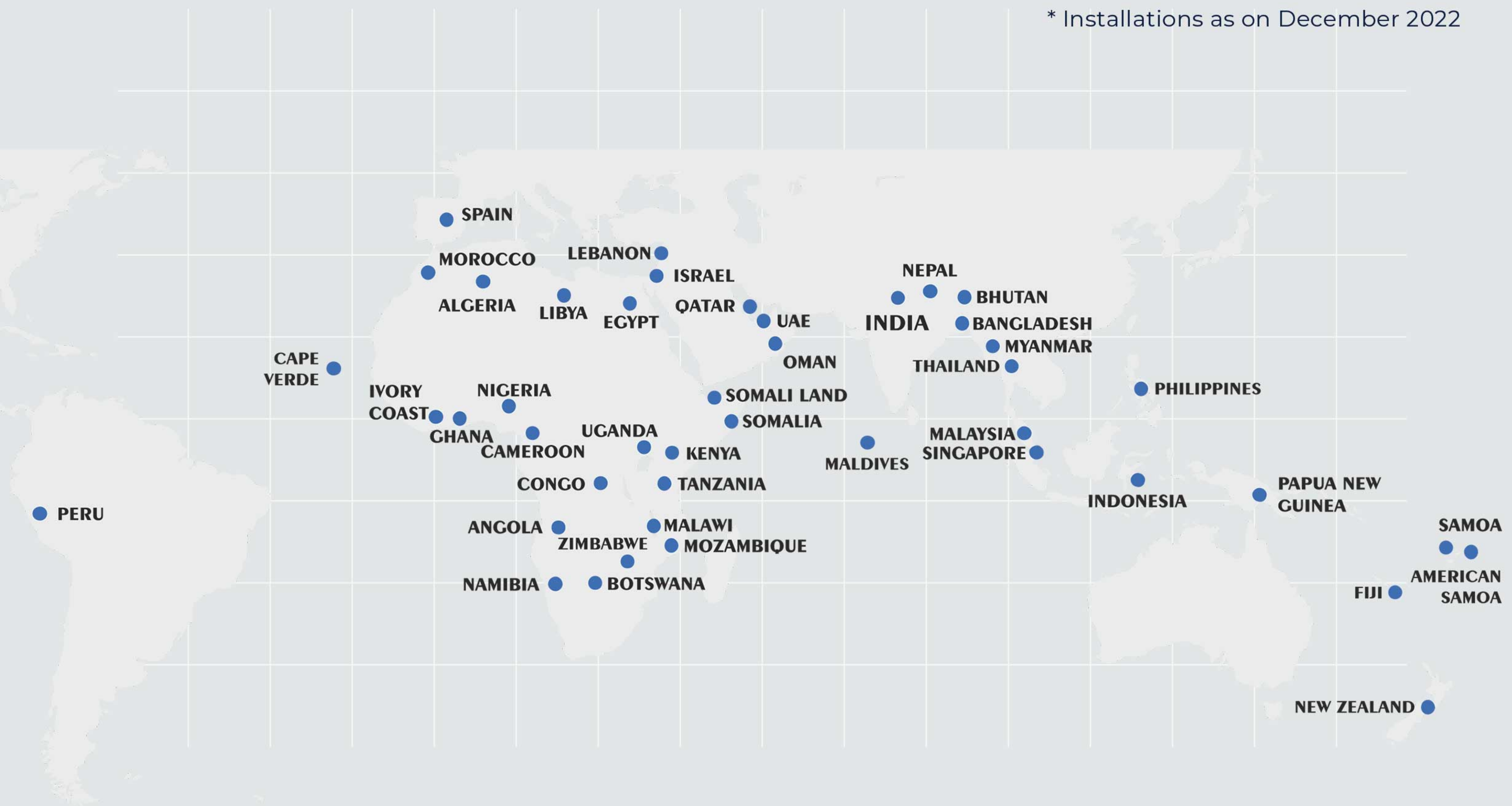


# GLOBAL INSTALLATIONS

---

With the help of our overseas support team we have been able to serve customers in more than 44 countries in a short time.

\* Installations as on December 2022



**2500**

Installations  
worldwide

**44+**

Countries  
exported

**1750+**

Satisfied  
customers



# PRODUCTS

---



## Stationary asphalt batch plant

---

60 to 260 tph



## Mobile asphalt batch plant

---

80 to 160 tph



## Asphalt drum mix plant (Parallelflow)

---

20 to 200 tph



# PRODUCTS

---



## Asphalt drum mix plant (Counterflow)

---

20 to 200 tph



## Mobile asphalt drum mix plant (Parallelfow)

---

20 to 200 tph



## Mobile asphalt drum mix plant (Counterflow)

---

20 to 200 tph



# PRODUCTS

---



## Stationary concrete batch plant

---

30 to 200 m<sup>3</sup>/hr.



## Mobile concrete batch plant

---

20 to 75 m<sup>3</sup>/hr.



## Portable concrete batch plant

---

10 to 30 m<sup>3</sup>/hr.



# PRODUCTS

---



## Wet mix macadam plant

---



100 to 300 tph

---

## Bitumen pressure distributor

---



3 to 12 tons

---

## Bitumen drum decanting machine

---



4 to 10 tph



# PRODUCTS

---



## Kerb (divider) making machine

---



## Road sweeping equipment

---



## Small concrete mixers

---







ATLAS TECHNOLOGIES PVT. LTD.

Block No. 97, Mehsana-Ahmedabad Highway, Behind Bhupendra Crane House,  
At & Po. Ditasan - 382710. District: Mehsana, Gujarat, India

[www.AtlasTechnologiesIndia.com](http://www.AtlasTechnologiesIndia.com)

Export inquiries:  
+91 97238 10565

Domestic inquiries:  
+91 98240 40565  
+91 98795 54550