

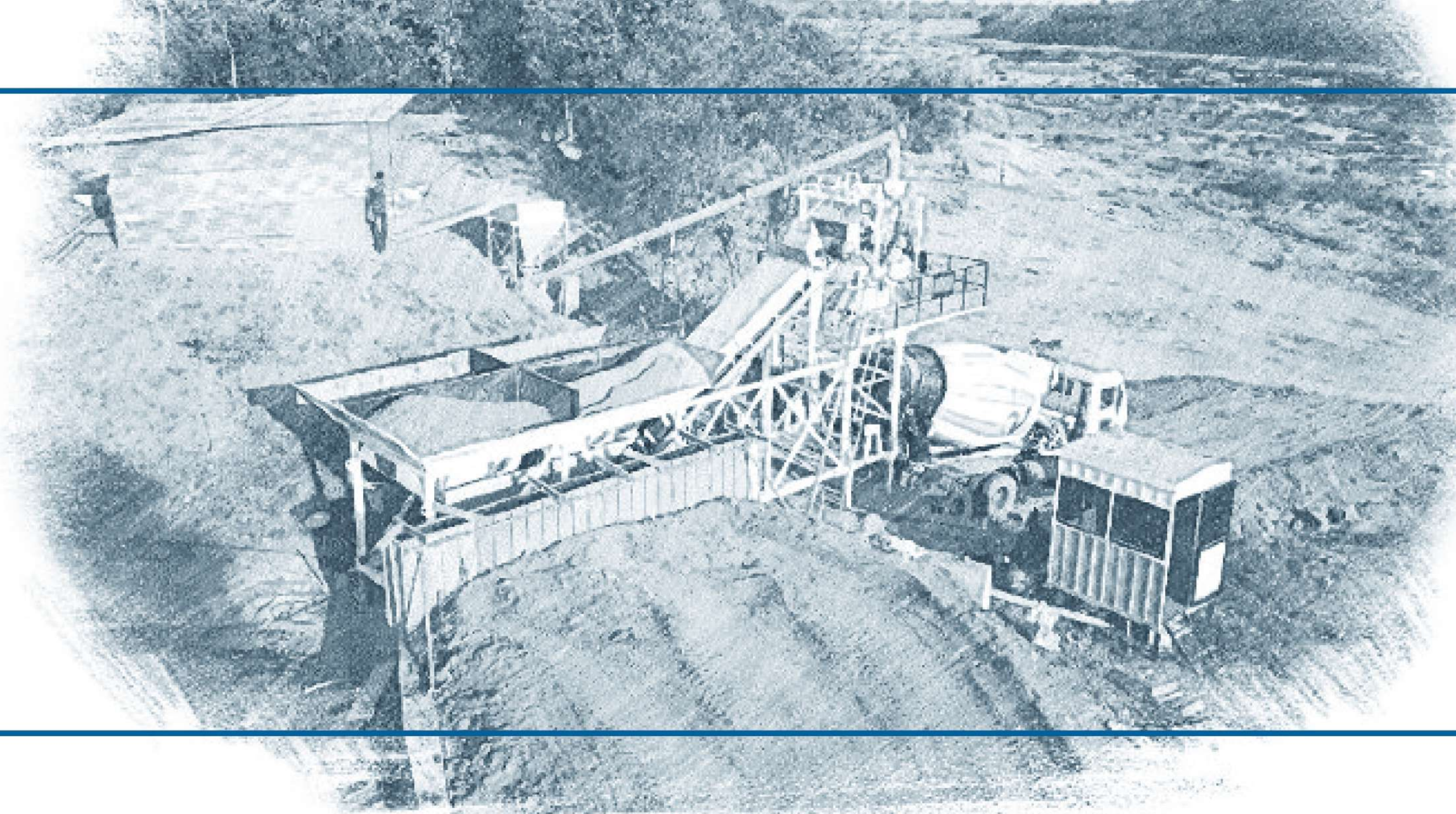


**ATLAS
EQUIPMENTS**



**PORTABLE CONCRETE
BATCH MIX PLANT**

FEATURES





MIXER IS PAN TYPE THAT OFFER GOOD MIXING IN A SHORT TIME



MANUAL, AS WELL AS AUTOMATIC OPERATION, IS POSSIBLE BY PLC PANEL



TRANSPORTATION TAKES UP LESS SPACE
TRANSPORTATION IS LESS COSTLY



WEIGHING OF ALL MATERIALS IS AUTOMATICALLY DONE AS PER RECIPE SET FROM THE CONTROL PANEL



THE WEIGHING IS BY ELECTRONIC LOAD CELL



CONTROL PANEL IS A TOUCH SCREEN WITH COLOUR DISPLAY & EASY TO USE SOFTWARE



ARMS, TIPS, & LINER PLATES OF THE MIXER ARE EASY TO REPLACE



POSSIBLE TO STORE, EDIT, DELETE, AND USE MULTIPLE RECIPES.



SEPARATE WEIGHING OF WATER, CEMENT, & ADDITIVE



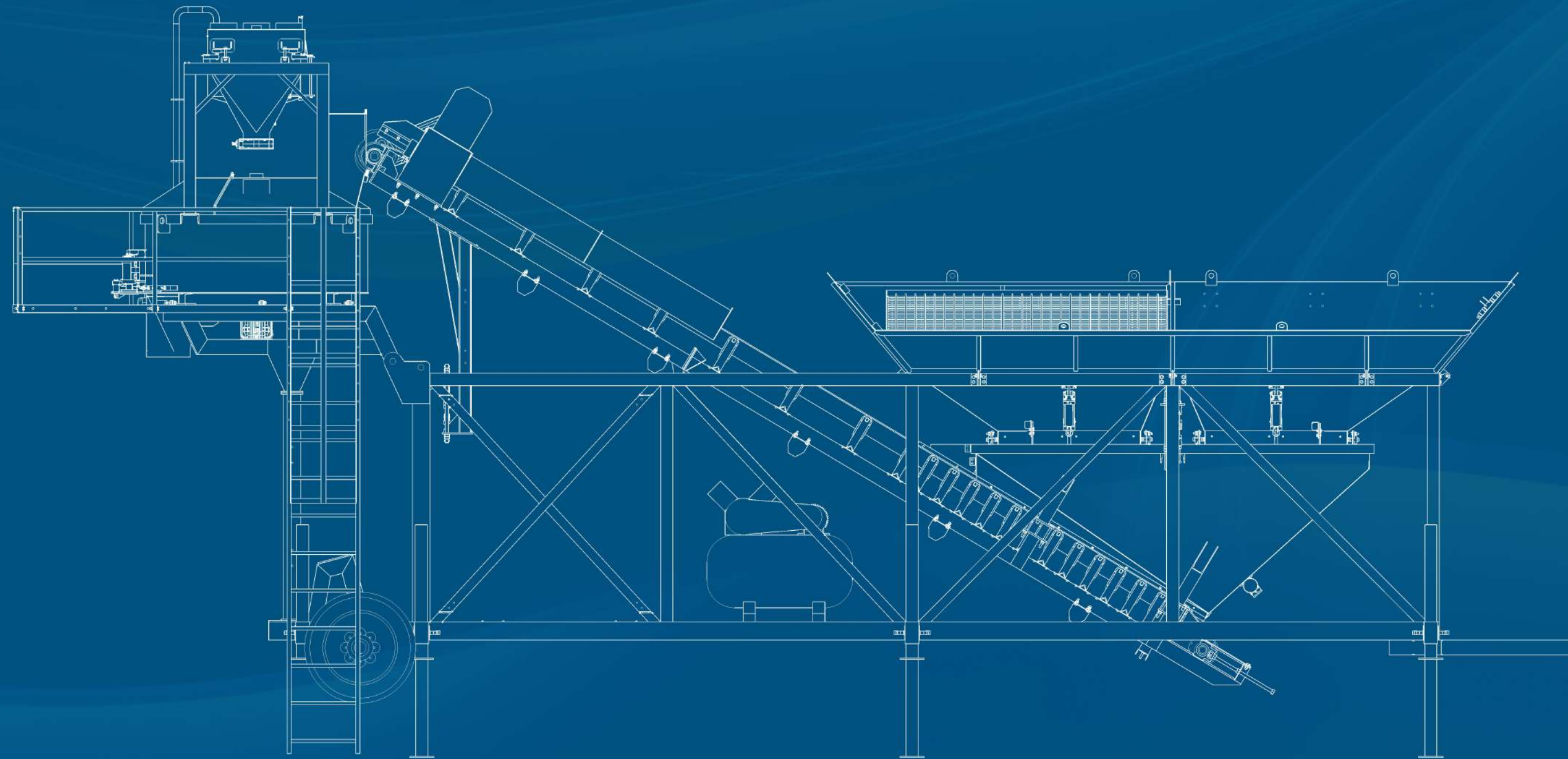
IT IS POSSIBLE TO ERECT & COMMISSION THE EQUIPMENT IN 1-2 DAYS



MAIN CHASSIS IS RIGID & STRONG TO SURVIVE MANY YEARS OF OPERATION



HEIGHT IS LESS WHICH MEANS INSTALLATION IS EASY.

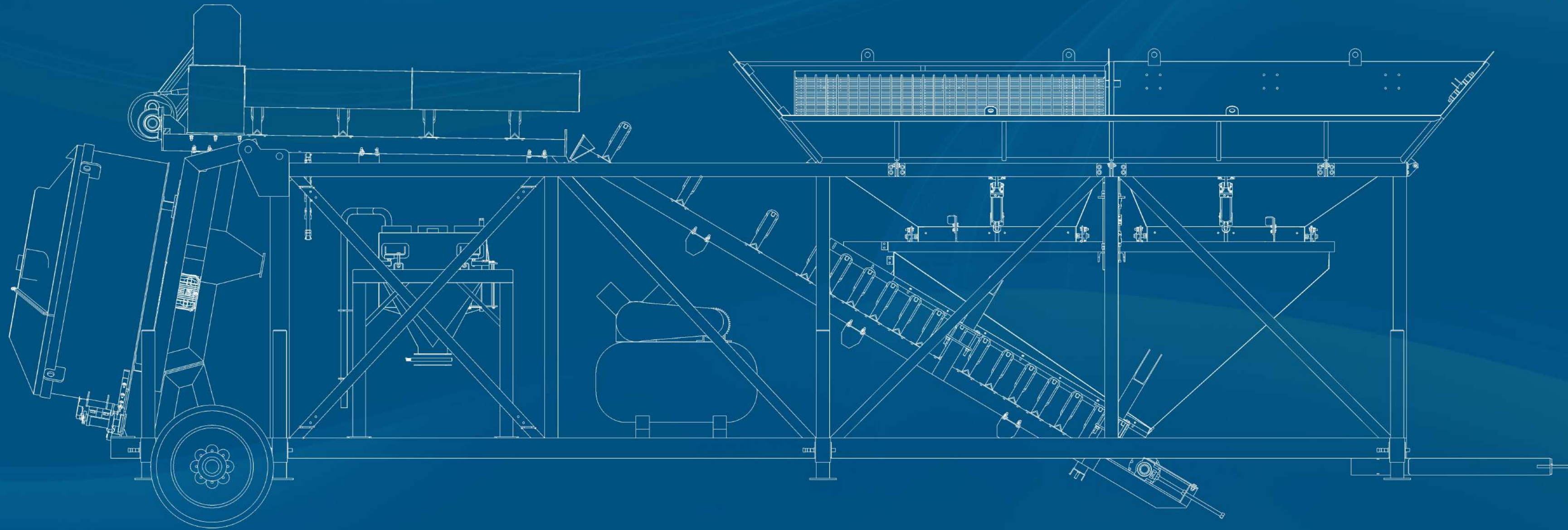


PLANT CAPACITY
25m³ / hour & 30m³ / hour

LAYOUT

PLANT CAPACITY
25m³ / hour & 30m³ / hour

LAYOUT



COMPONENTS





AGGREGATE FEEDER

It features a 2 x 2 bin feeding system. The bins are in 2 x 2 pattern, but they are 4 in number. It is possible to add total of 4 different materials in the feeder bins. Gates are pneumatically operated. The sand bin features a vibrator for the free flow of aggregates.



AIR COMPRESSOR

Air compressor can be mounted on the feeder bins or it can be separate depending on the requirement of the customer. It is an important component sourced from a reputed manufacturer. It will help control the feeder gates, mixer gates, and all the butterfly valves.



WEIGHING & DISCHARGE CONVEYOR WEIGHING

Weighing conveyor is suspended on a total of 4 load cells. Weigh conveyor will transfer the aggregates after weighing into the mixing unit.



MIXING UNIT

Pan mixer is the standard mixer that is offered here. It is a tried and tested unit to make 25 or 30 m³/hr. depending on the capacity selected. The liner plates are easy to replace. Arms and tips are high wear-resistant. Aggregates, sand, cement and water will be discharged into the mixing unit. It will help mix the contents uniformly and homogeneously. The mixer has a gate at the bottom. This gate is pneumatically operated.



WEIGHING SYSTEM

Separate weighing for cement, water, and additives is provided. Each of the components have its individual weighing hoppers suspended on load cells. The load cell mechanism is best as it will allow to accurately and independently weigh the contents. All the weighing hoppers are located above the mixer. After weighing, they will discharge the same into the mixer.



CEMENT HOPPER AND CEMENT SILO

Cement hopper is standard with the machine. It is capable to hold at least 30 bags (1500 kgs. capacity) at one go. It is possible to have a bigger hopper. It is equipped with a vibrating motor for the free flow of the cement. A separate unit for fly ash can be provided. Cement storage silo's can be provided separately. Vertical or horizontal cement silos are manufactured and exported by Atlas.



CONTROL PANEL INTO CONTROL CABIN

PLC touch screen type control panel is provided for easy operation of the batching plant. The software is easy to use with colour display and touch screen controls. The panel is able to store, edit, and even delete recipes. The maximum number of recipes that can be stored is 99. If the customer opts for SCADA they can view the panel real-time and trouble-shooting will be very easy.

- *Installations as on SEP-2020
- 1100+ plants running in India



ATLAS GLOBAL INSTALLATIONS



ATLAS EQUIPMENTS

Block No. 97, Mehsana-Ahmedabad Highway, Behind Bhupendra Crane House,
At & Po. Ditasan - 382710, District: Mehsana, Gujarat, India.

For export inquiries: +91 97238 10565

For domestic inquiries: +91 98795 54550

