



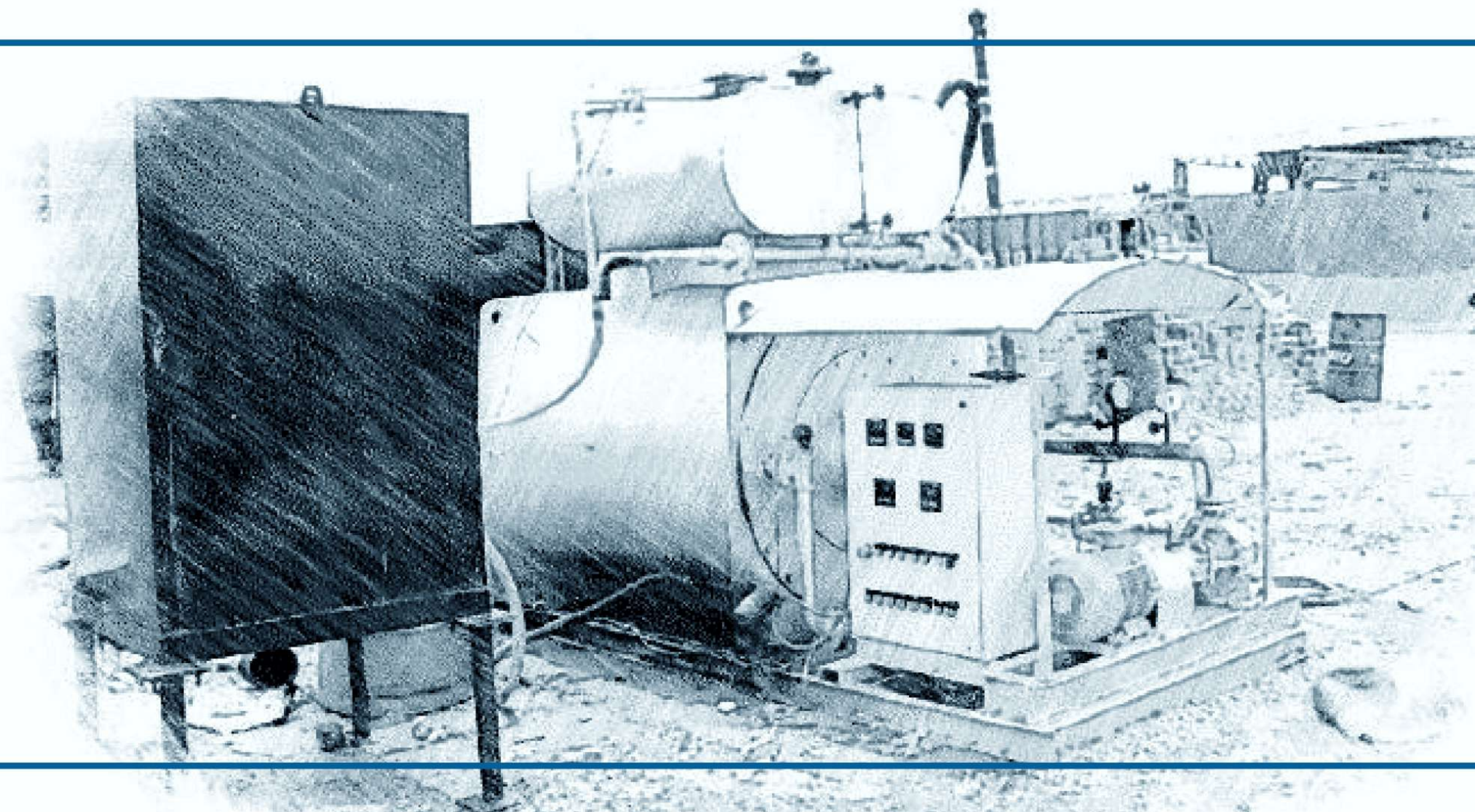
**ATLAS  
EQUIPMENTS**

BITUMENDECANTER  
MODEL:ACM-7

**BITUMEN DRUM MELTING UNIT**



# FEATURES





RELIABLE, EFFICIENT AND SAFE  
WAY TO MELT BITUMEN.



LOW NOISE & EFFICIENT BURNER



IDEAL FOR SITES WHERE BITUMEN  
AVAILABILITY IS A PROBLEM



INDIRECT HEATING SYSTEM BY THERMIC  
HEATER DOESN'T ALLOW BITUMEN AGEING



THERMIC HEATER WORKS WITH DIESEL



OPTIONAL FUELS LIKE FO, LDO, WOOD  
OR GAS FIRED HEATERS ARE AVAILABLE



EASY TO ASSEMBLE AND CHANGE SITES



EFFORTLESS LOADING OF BITUMEN  
BARRELS BY HYDRAULIC ARMS



CAN BE INTEGRATED IN ANY SYSTEM  
IT CAN FILL BITUMEN TRUCKS | TANKS



MAIN UNIT IS FULLY INSULATED TO  
COVER HEAT LOSS



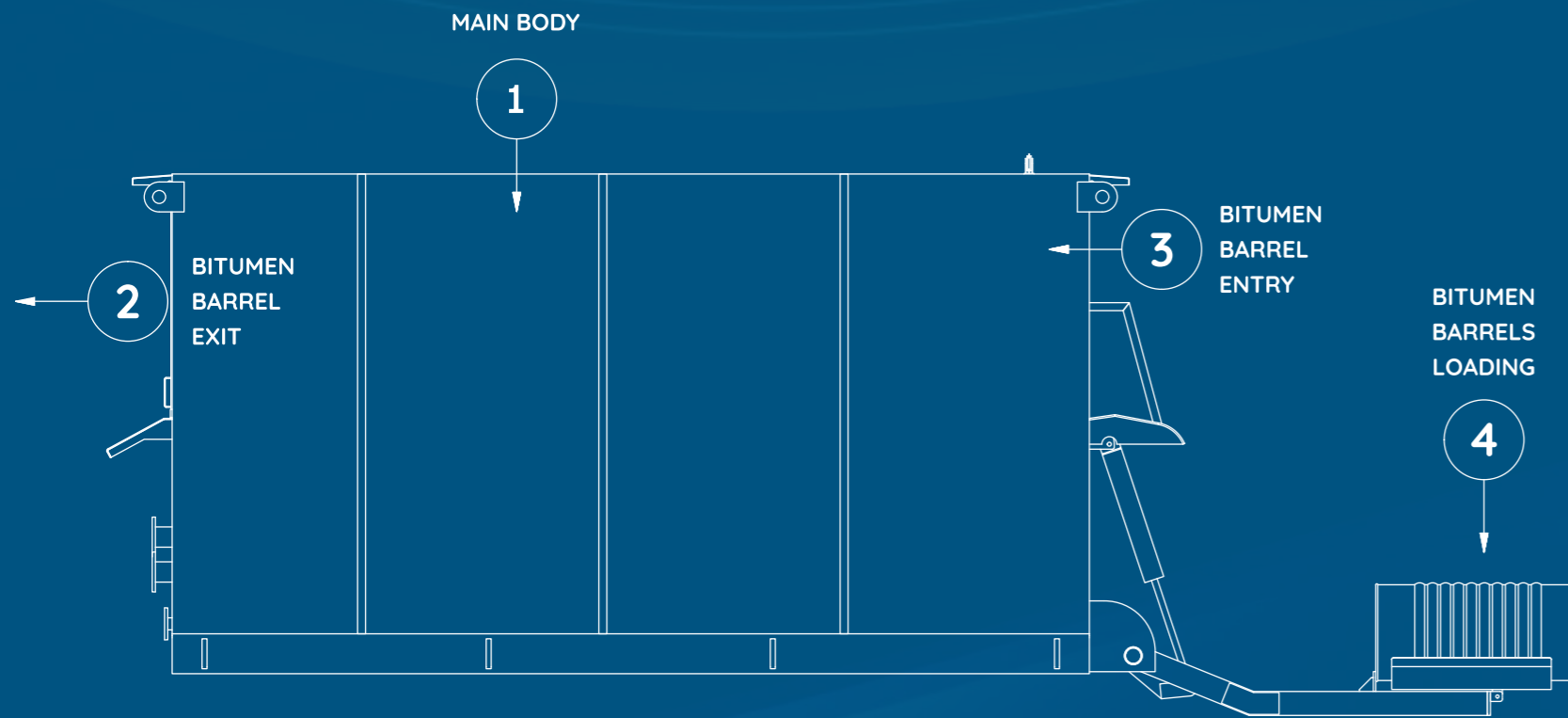
SUFFICIENT STORAGE OF BITUMEN BELOW  
THE MAIN UNIT & CAN BE INCREASED



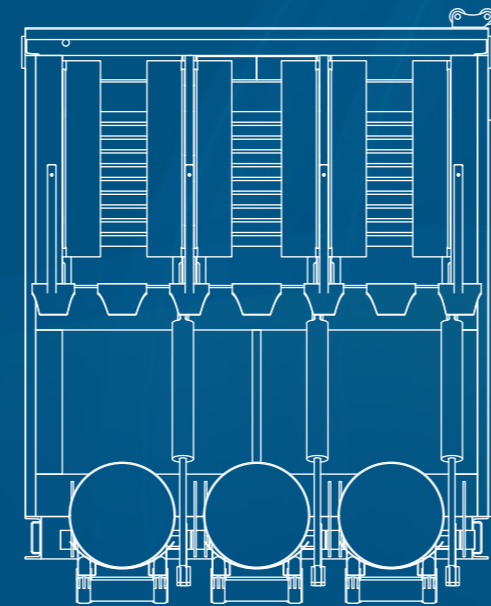
EASY TO USE MACHINE - CAN BE  
OPERATED WITH SOME TRAINING.

# LAYOUT

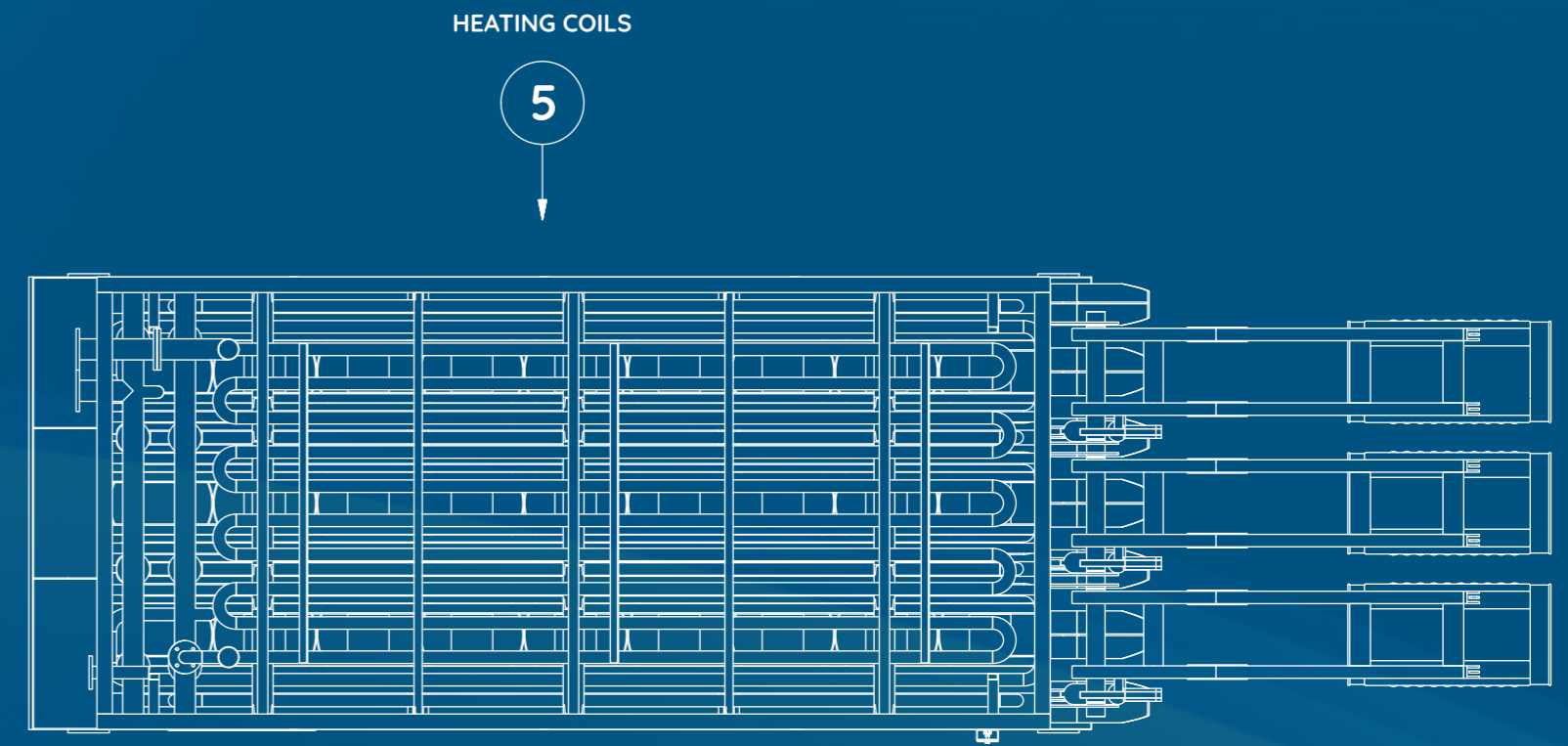
**PLANT CAPACITY  
4 TPH**



**SIDE VIEW**



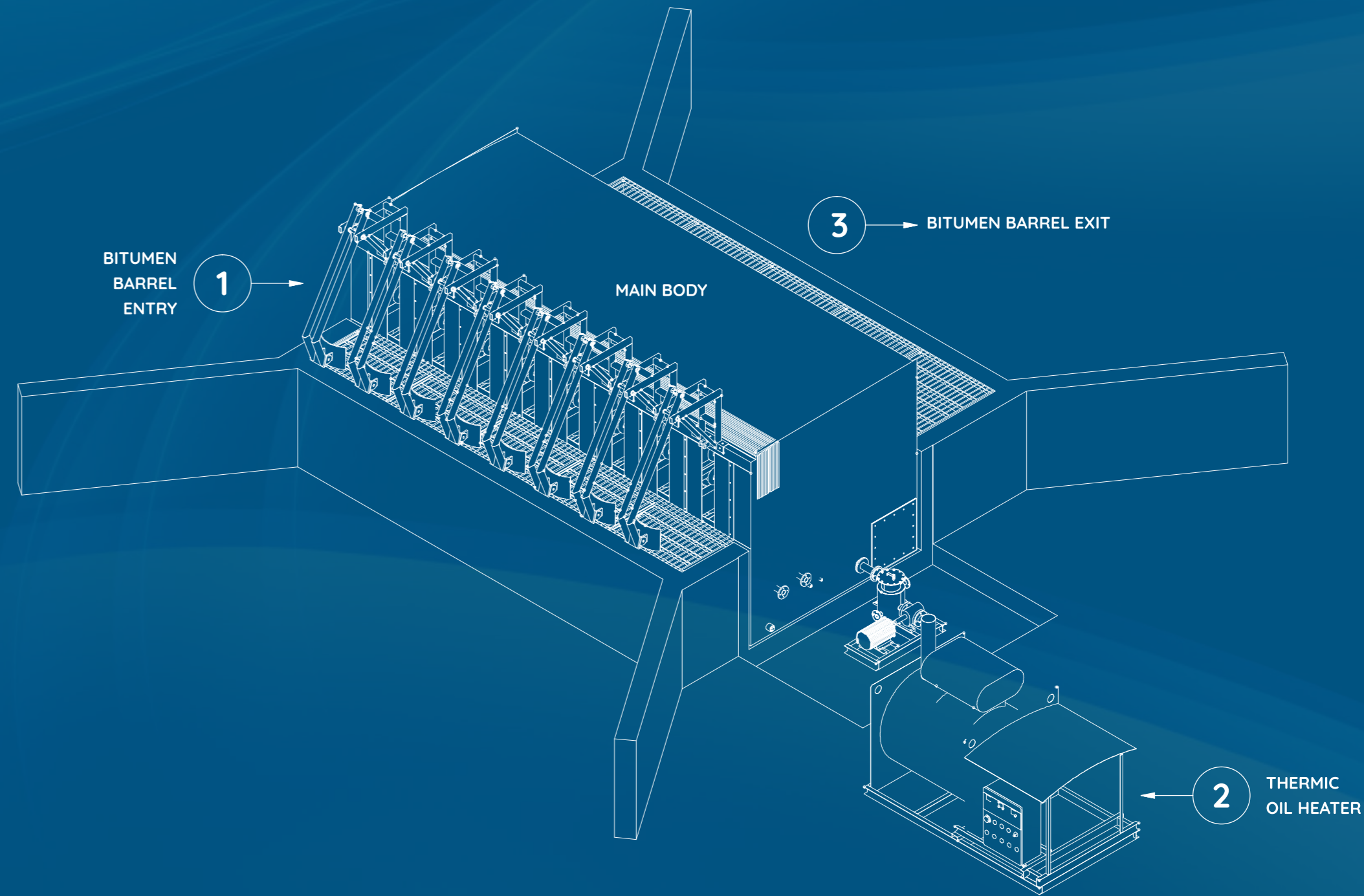
**FRONT VIEW**



**TOP VIEW**

# LAYOUT

**PLANT CAPACITY**  
**6 TPH | 8 TPH | 10 TPH**



## BITUMEN DECANTING MACHINE | BITUMEN DRUM MELTING UNIT

Atlas drum melting unit comes in 4 models and range in the capacities 4 tph, 6 tph, 8 tph and 10 tph. Also with 27, 40, 50 and 60 drums respectively. Each model comes with suitable storage capacity below the unit. The batch time is 60-70 minutes in continuous operation. Heating of asphalt that is stored below also by indirect heating which is very safe method and does not allow ageing. A pump is provided so that liquid material can be transferred into another container.

Bitumen is melted by hot gas which is generated due to the continuous flow of hot oil inside the heating chamber. It is collected below the machine. It can be transferred as and when required. Heating is by thermic oil heater which is very safe and economical method. The thermic oil heater uses diesel / LDO to heat oil.

Loading of drums inside the decanting machine is hydraulically and is pushed into the machine. The drums have to be fed continuously inside the decanter. Drum arrangement is in rows that will help drums enter one side of the machine thus helping in pushing the other drums. Drum will melt completely and exit the other end of the heating chamber. The upper part is the heating chamber and the lower part is the storage section for liquid bitumen. Heating chamber is fully insulated from all sides by 50 mm glasswool.



ALL PRODUCTS \*



**ATLAS GLOBAL INSTALLATIONS**



## **ATLAS EQUIPMENTS**

Block No. 97, Mehsana-Ahmedabad Highway, Behind Bhupendra Crane House,  
At & Po. Ditasan - 382710, District: Mehsana, Gujarat, India.

For export inquiries: +91 97238 10565

For domestic inquiries: +91 98795 54550

[contact@atlasequipments.com](mailto:contact@atlasequipments.com)

